

## The perfect fit for the mid-size segment MatchFlow

MatchFlow is a new kind of suction roll cover specially designed to meet mid-size requirements. As the driving force behind maximum dewatering, it is going to be a lasting game-changer in the press section thanks to the wide range of surface design options it offers. MatchFlow is setting new technological benchmarks and offers various design options for customized surfaces intended to maximize dewatering capacity, enabling either higher production rates or reduced energy consumption in the dryer section. MatchFlow can be supplied with a smooth, grooved, blind-drilled or combined grooved and blind-drilled surface.

MatchFlow is a new key player in our roll cover team that ideally suits mid-size presses with moderate loads. MatchFlow offers improved dewatering capacity and long grinding intervals. MatchFlow, the new member of our line-up, combines the benefits of rubber and polyurethane roll covers customized to your requirements.

Our specialists will be happy to advise you on which roll cover and surface design will provide the best results for your paper machine.

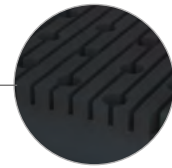
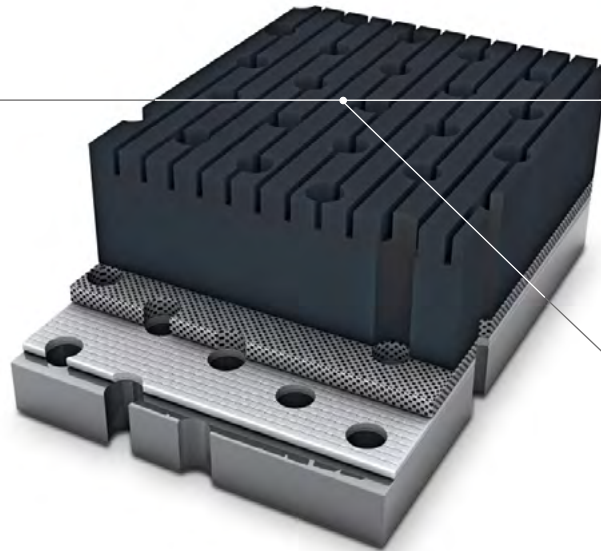
---

## MatchFlow

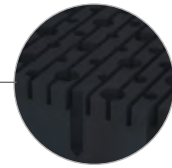
Customized surface designs



Suction hole drilled



Suction hole drilled and grooved



Suction hole drilled, blind-drilled and grooved

---

Voith Group  
St. Poeltener Str. 43  
89522 Heidenheim  
Germany

[www.voith.com/paper](http://www.voith.com/paper)

Contact:  
Phone +49 7321 37-0  
[paper@voith.com](mailto:paper@voith.com)



# VOITH

Inspiring Technology  
for Generations