

Virgin Pulp	Graphic/ Speciality	Raw Material Handling	Pulping	Screening	Centrifugal Cleaning	Deinking	Washing Dewatering	Fiber Treatment	Approach Flow System	Water, Sludge, Reject
Recovered Paper	Board & Packaging									
Broke + Approach Flow System	Tissue									
ProEnergy ++		ProQuality +++		ProCapacity +++		ProYield ++++		ProSpace ++		ProEnvironment +++

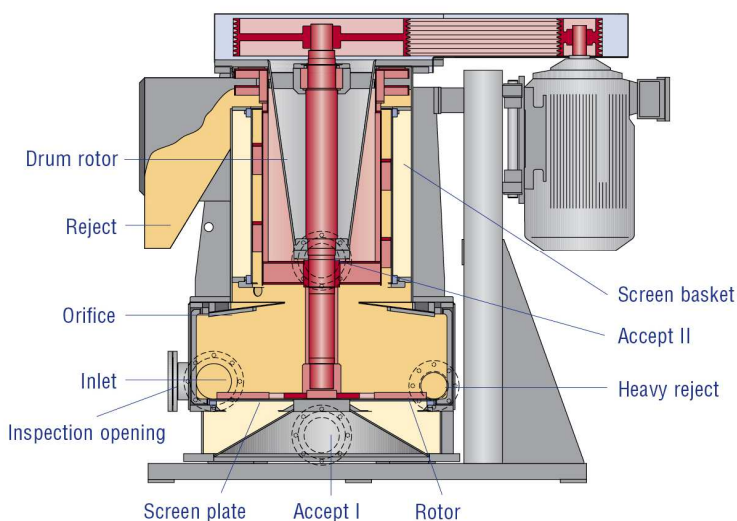
Combisorter CSM

The reject screen for low fiber loss

Combisorter™ is a continuously operated reject screen. With very high consistency in the reject discharge, no further thickening machine is required. At the same time, fiber loss is reduced to a minimum due to its high efficiency. Due to the good screening efficiency a feed forward system with the accept stock is possible.

Customer benefits

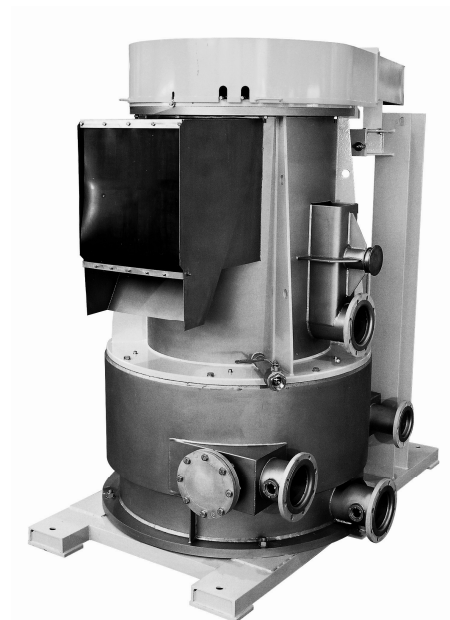
- + High throughput with continuous operation
- + Low wear due to basalt lining of the enclosure
- + Largely fiber-free rejects
- + Simple control via the feed pressure



1

1 Principle Combisorter CSM

2 Combisorter CSM



2

Areas of application

The Combisorter is used in hole screening or as intermediate screen in combi-screening.

Sizes

Worldwide there are 3 sizes with final stage production quantities* from ca. 50 to 200 metric tons / 24 h.

* Depending on stock composition, consistency, contaminant and flake content, etc.

Options and possible combinations

Raw material quality is addressed by the use of suitable rotors.

Maintenance intervals and services

Voith offers a comprehensive repair and optimization program for the screen basket, screen plate, the upper and lower part of the enclosure, cylinder rotor, rotor blade and orifice with deflector strips. The technical customer service center is available for further information and specific advice.

References

Over 400 machines are successfully in use worldwide.

Further Information

- Link to product finder:
www.voith.com/paper