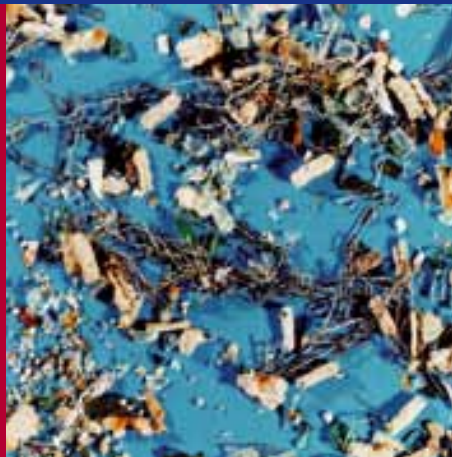


## Centrifugal Cleaning High Consistency Cleaner HiCC400B/HiCC600B



### Your requirements

- Protect downstream machinery, such as screens and deflakers, from abrasive contaminants used in stock preparation and broke refining
- Extremely high removal ratio for specific heavy contaminants, such as stones or paper clips
- Low machine wear
- Low fiber loss

### Our solutions

- Universal protection of several machines at different locations in the process:
  - In the stock prep area to protect screening machines
  - In the approach flow area to protect deflakers after rejects refining
- High centrifugal forces provide outstanding separation ratios for specific heavy contaminants
- Ceramic or chrome coating available for the aggregate's inner surface
- Intermittent operation possible to minimize fiber loss

### Your benefits

- Abrasives removal results in lower maintenance costs, longer life for stock prep and approach flow wear parts
- Ceramic or chrome coating of inner rejects cone maximizes wear life
- Nearly total removal of impurities maximizes yield

Voith Paper Fiber & Environmental  
Solutions GmbH & Co. KG  
Escher-Wyss-Straße 25  
88212 Ravensburg, Germany  
Tel. +49 751 83 01  
Fax +49 751 83 2050  
info.vpr@voith.com

Voith Paper Inc.  
Fiber & Environmental Solutions  
2200 N. Roemer Road  
Appleton, WI 54911, USA  
Tel. +1 920 731 7724  
Fax +1 920 731 0240

Voith Paper Máquinas  
e Equipamentos Ltda.  
Fiber & Environmental Solutions  
Rua Friedrich von Voith, 825  
02995-000 São Paulo-SP, Brazil  
Tel. +55 11 3944 4181  
Fax +55 11 3944 4848

Voith Paper China Co., Ltd.  
199 ChenFeng Road  
New and Hi - Tech Industrial  
Development Zone  
Kunshan, Jiangsu 215300, China  
Tel. +86 512 57 99 36 00  
Fax +86 512 57 99 36 11

[www.voithpaper.com](http://www.voithpaper.com)

#### Technical data

Size		HiCC400B	HiCC600B
Throughput	[l/min]	3400 ... 7700	7000 ... 13700
Stock consistency	[%]	3,0 ... 4,5	
Operating pressure	[bar]	6,0	
Differential pressure (inlet – outlet)	[bar]	1,0 ... 1,5	

**VOITH**  
*Engineered reliability.*