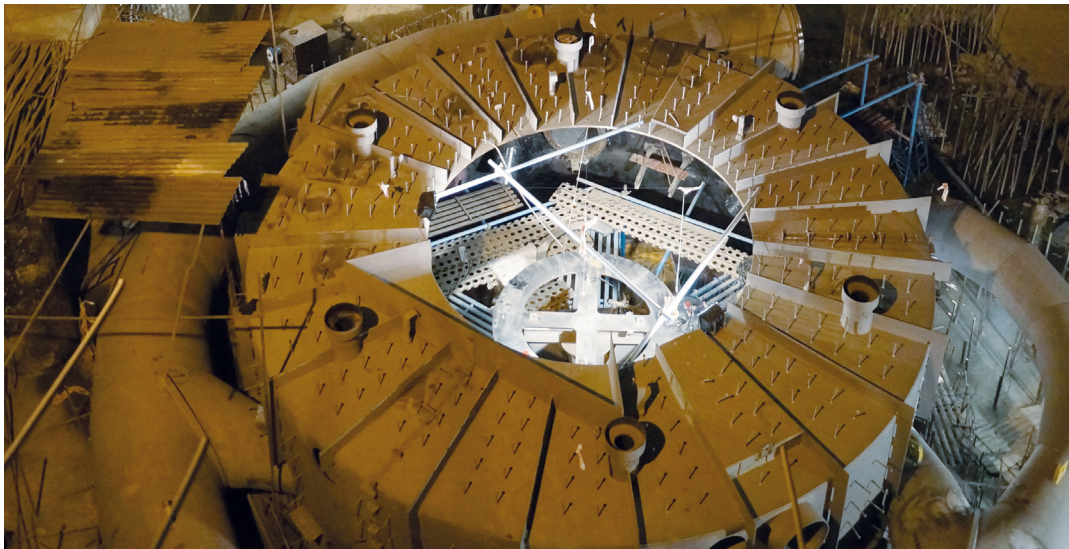


Project Fact Sheet. Sainj – 100 MW Hydro Electric Power Plant



The 100 MW Sainj hydroelectric project is being constructed by the state-run Himachal Pradesh Power Corporation Limited (HPPCL) in Kullu district in the state of Himachal Pradesh, India. Sainj HEP is a run of the river project on Sainj river – a tributary of Beas River. The project is scheduled for commissioning in 2015.

Voith Hydro is responsible for execution of complete scope of Electro-mechanical works on turnkey basis which broadly consists of Engineering, Procurement, Installation, testing and commissioning of 2 generating units each of 50 MW with its ancillaries and balance of plant equipment.

Key Features

Turbine

Turbine type	Vertical Pelton
Number of units	2
Nominal rated output per unit	51.144 MW
Rated speed	375 rpm
Rated net head	397.36 m
Runner diameter	2762 mm
Rated discharge	14.35 m ³ /s

Generator

Rated output	55.56 MVA
Rated power factor	0.9
Rated voltage	11 kV

Major auxiliaries including

Switchyard voltage	400 KV (GIS)
No. of bays	05
Main Inlet Valves	02

Station & Auxiliary Transformers,
Cable & Cable carrier system,
MV & LV Switchgear, EOT Crane

Location



Voith Hydro Pvt. Ltd.
A-20 & 21, Sector-59,
Noida – 201 301 (UP/India)
Tel. +91 120307-4242
Fax +91 120307-4243
hydro.india@voith.com
vhnsales@voith.com
www.voith.com

A Voith and Siemens Company

VOITH
Engineered Reliability