



Complete surface scan fully supported by pictures QualiFlex Service

The inspection of shoe press sleeves is an essential service during the whole product runtime. Surface measurements offer important information about the remaining lifetime, product condition and product performance on the machine.

With the newly developed Voith Surface Scanner, groove dimension measurements on a shoe press sleeve are carried out during a shutdown. The measured values include, e.g., groove depth, width and land width.

To this day, wear analyses on press sleeves are carried out using manual imprints. The profile thus generated are only single point measurements. If, in the past, critical wear points were overlooked due to the manual selection of measuring points, this could have had a serious impact on the paper. This is exactly where the new Surface Scanner comes in. The scanner carries out a seamless full width profile even including pictures. In addition, measurement inaccuracies or personal differences are completely excluded. With the data collected by the Surface Scanner, the open area and void volume of the grooved shoe press sleeve are calculated. Possible wear issues are detected, thereby preventing unplanned shut-downs.

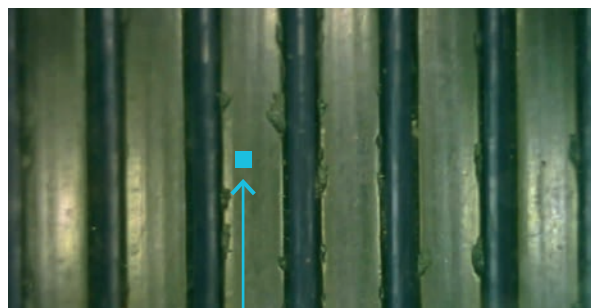
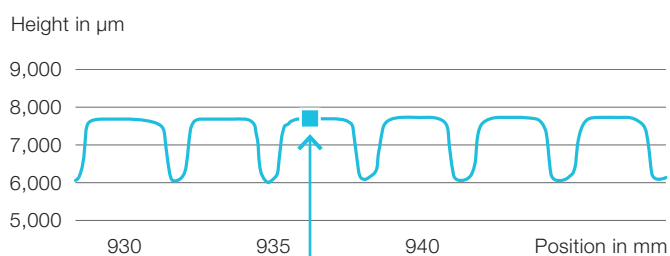
Automatic measurements versus manual measurements



The Voith Surface Scanner is a self-driven device with a laser measuring head. It provides seamless full-width measurement and photo documentation. The data transfer works easily via an SD-card to a laptop for analysis. The self-driven Surface Scanner is aligned by a laser head and follows a straight line without any pushing or holding, thereby measurement irritations are eliminated.

With the Voith Surface Scan Service, you not only receive a full profile over the length of your shoe press sleeve, but you also get a seamless high-resolution image documentation of the surface.

Detailed analysis of the profile with sharp, precise images



Benefits

- + Fast and easy surface measurement
- + Remaining lifetime analysis by calculation of the void volume
- + Wear detection over the full width
- + Detailed photo documentation
- + Latest technology of self-driven system to exclude measurement irritations
- + Preventive condition check
- + Full wear analyses

Voith Group
St. Poeltener Str. 43
89522 Heidenheim
Germany

Contact:
Phone +49 7321 37-0
paper@voith.com

www.voith.com/paper



VOITH