

Press Release

Voith Turbo GmbH & Co. KG
Alexanderstr. 2
89522 Heidenheim, Deutschland
Tel. +49 7321 37-8497
Fax +49 7321 37-7110
www.voith.com

2015-07-13

Voith's Variable Speed Planetary Gear Vorecon with Dual Torque Converter Growing in U.S. Market

Voith's patented Vorecon with Dual Torque Converter is expanding its footprint in the U.S. market, with five Vorecons equipped in compressor stations transporting natural gas from the Marcellus shale formation into markets in the mid-Atlantic and Southeast states. These Vorecons are increasing transport capacity by over 25 percent, and improving reliability and efficiency in the process. The Vorecon with Dual Torque Converter is a variable speed planetary gear with two matched torque converters. It delivers high efficiency, even into the lower speed range, providing an efficient way to control the speed of large pumps and compressors in use in a variety of fields. It is up to two percent more efficient than variable frequency drives (VFD).

"Vorecons with Dual Torque Converters are quickly expanding their presence in markets across the United States," says Jim Kosalek, Vice President of Voith Turbo's Power, Oil & Gas Division in North America. "From Marcellus to Eagle Ford, customers are turning to the latest in Voith's cutting edge technology to improve efficiency, reliability, and power in their operating systems. Given the advantages the Vorecon with Dual Torque Converters provides, we expect demand will continue to mirror the tremendous growth of the oil and natural gas sectors in the U.S."

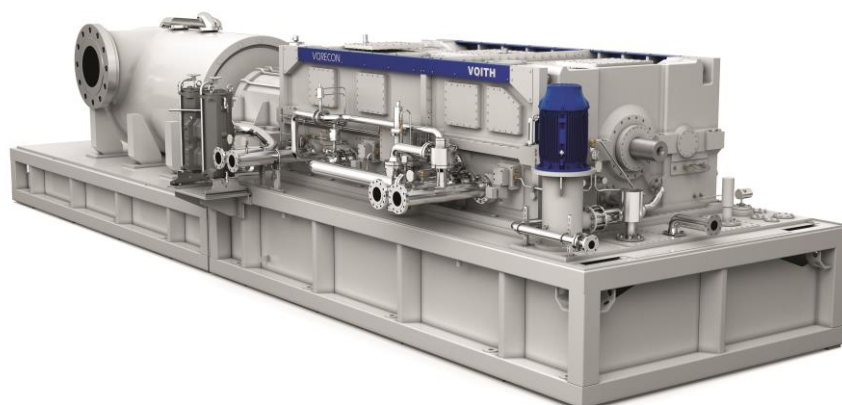
The Vorecon with Dual Torque Converter is the ideal solution for operating points that frequently fall within 60 to 90 percent of maximum speed, and still provides high torque at low speeds – up to 42 percent higher than VFDs. It's also highly reliable; the mean time between failures for the Vorecon is 48 years, boosting the productivity of the system, and will last three times longer than a VFD system.

Worldwide, over 140 customers trust Vorecon technology. These include companies operating in oil and gas production, transport and treatment as

well as power plant operators. Furthermore, the Vorecon is increasingly equipped on offshore platforms and FPSOs as it requires 68 percent less space than an electronic control solution.

Voith Turbo GmbH & Co. KG
Alexanderstr. 2
89522 Heidenheim, Deutschland
Tel. +49 7321 37-8497
Fax +49 7321 37-7110
www.voith.com

Page 2 of 2



The Voith Variable Speed Planetary Gear Vorecon with Dual Torque Converter

Voith Turbo, a Group Division of Voith GmbH, is a specialist for intelligent drive solutions and systems. Customers from highly diverse industries such as oil and gas, energy, mining and metal processing, mechanical engineering, ship technology, rail and commercial vehicles rely on advanced technologies from Voith Turbo.

Voith sets the standards in the markets energy, oil & gas, paper, raw materials, and transportation & automotive. Founded in 1867, Voith employs more than 39,000 people, generates €5.3 billion in sales, operates in about 50 countries around the world and is today one of the largest family-owned companies in Europe.

Contact:
Susanne Speiser
Head of Internal & External Communications
Phone: +49 7321 37 8497
Susanne.Speiser@voith.com