





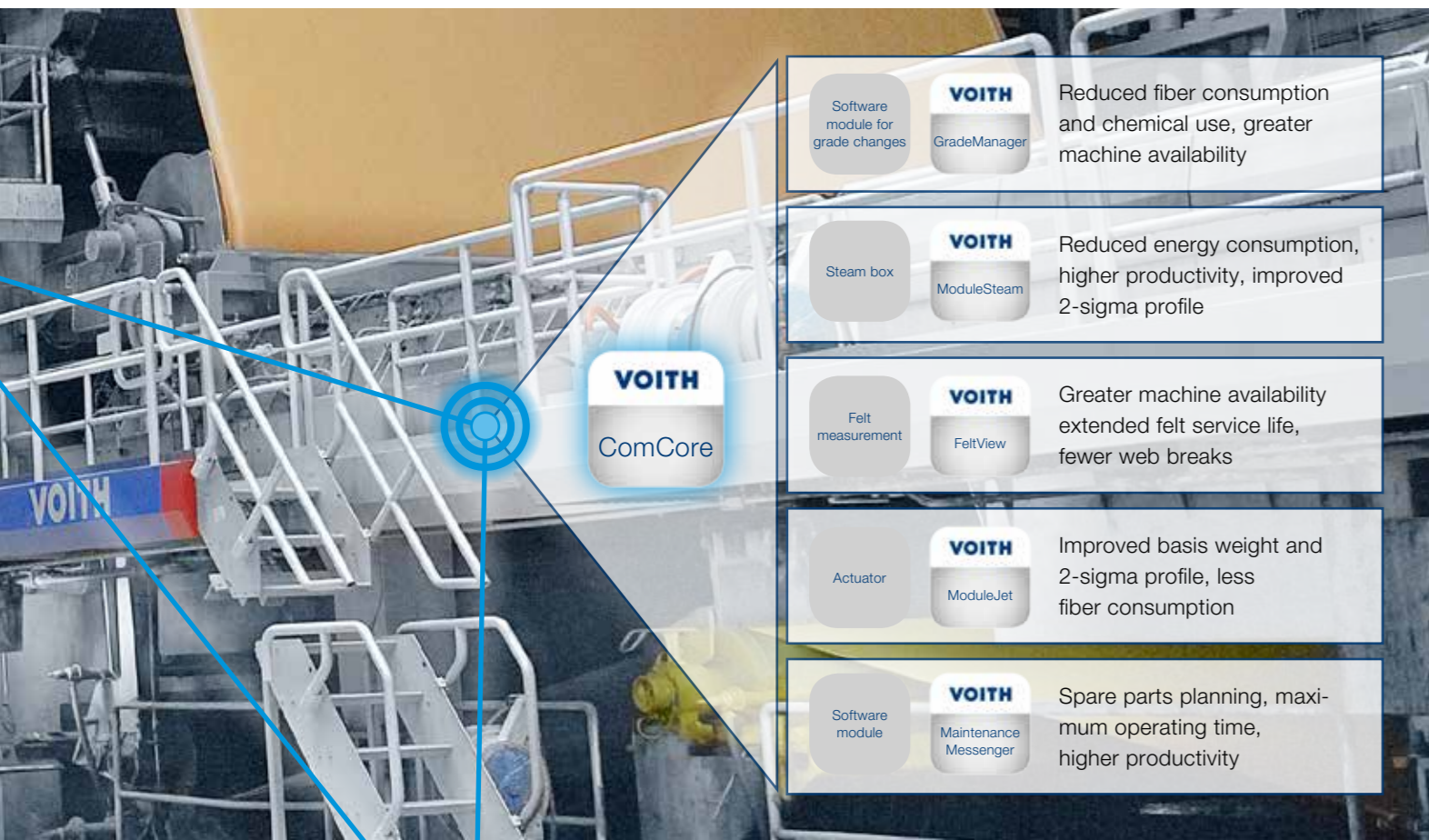


# Unlimited connectivity with Papermaking 4.0

ComCore combines all paper machine components – including those from other vendors. The more than 60 systems we have installed worldwide have enabled us to provide excellent solutions and create substantial added value for our customers.

## Case study Baseline situation and customer benefits after ComCore installation

Without ComCore	<p>High costs for servicing</p> 	<p>Vendor dependency due to contractual obligations</p> 	<p>Old system often using proprietary technology</p> 	<p>Vendor dependency for hardware components</p> 	<p>Lack of process transparency</p> 	<p>Efficiency problems Poor machine performance Standard quality control</p> 
With ComCore	<p>Web and technology standards result in very low TCO Engineered reliability mechanical</p>	<p>Integration of existing infrastructure Investment cost reduction through step-by-step upgrade</p>	<p>Future-proof investment (OPC UA) Decentralization</p>	<p>Not tied to specific hardware Not cost dependent</p>	<p>Integrated historical trend, analysis and reporting function</p>	<p>Innovative, cost-optimized control system Process expertise</p>



### Contact

Asia: Kunshan, China      Tel: +86 512 5799 3600  
 Europe: Heidenheim, Germany      Tel: +49 7321 37 2487  
 North America: Wilson (NC), USA      Tel: +1 252 265 4405  
 South America: São Paulo, Brazil      Tel: +55 11 3944 4966

### Further Information

   [paper@voith.com](mailto:paper@voith.com)  
[www.voith.com/paper](http://www.voith.com/paper)

vpz.no\_1298 | English | Design: keltany | 2016-02-18 | Technical data and illustrations subject to change!

# ComCore The new Voith Paper automation platform



# ComCore Scalable. Modular. Smart.

ComCore is the automation platform from Voith Paper specially developed to meet the needs of the paper industry. It is already setting benchmarks for the digital factory of the future that will have to meet the most stringent requirements for decentralization, cost efficiency and intelligent collection and processing of data. The increasing proliferation of digitization and fast-moving changes in system topography demand software that can be modularly extended and adjusted.

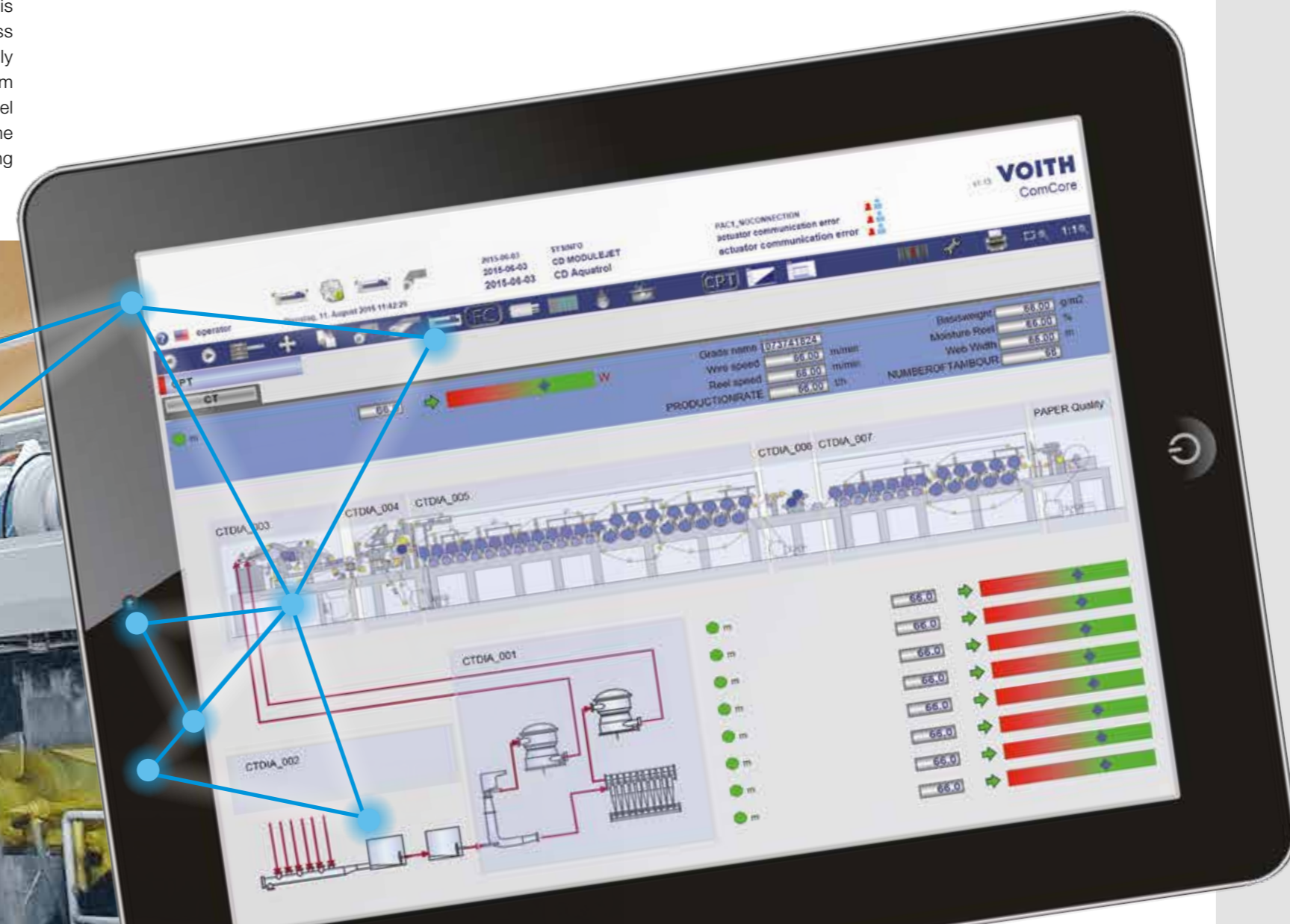
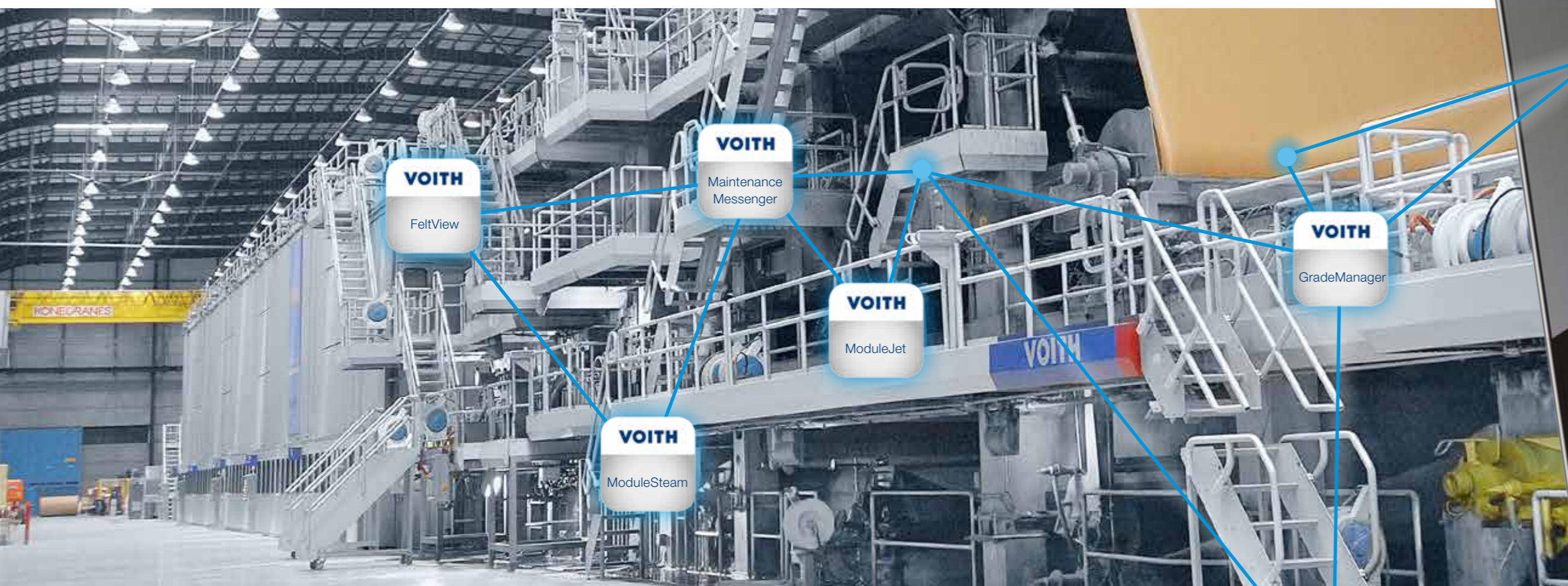
Conventional systems are often expensive over the long-term, because software and hardware come from a single source and therefore the customer is tied to that particular manufacturer. It can be much later before the drawbacks of this emerge, for example if an upgrade or expansion is necessary, entailing a substantial investment. ComCore is a modular alternative that can be easily integrated into the existing automation infrastructure regardless of whether the existing equipment is from Voith or another vendor. Thanks to a large number of industry-specific interfaces, the existing equipment can be directly incorporated and efficiency monitored and/or improved. Furthermore, the use of established industry standards ensures connectivity, low running costs and a future-proof investment.

For system connectivity, the "OPC UA" standard is currently the preferred communication protocol for Industry 4.0, as it allows the systems to work across platforms, industries and manufacturers. In its capacity as a non-profit organization, the OPC Foundation liaises with users, vendors and researchers in the development of the specifications. Thanks to the integrated information system, ComCore also offers data archiving, visualization and analysis tools. These tools help uncover the vulnerabilities that can trigger process fluctuations, quality problems and inefficient production. A transparent system is thus the basis for the ongoing improvement of your paper production.

Because the user interface is accessed via Microsoft Internet Explorer, elaborate client installations can be eliminated. This in turn reduces the budget for IT maintenance, because installation updates and special hardware are not necessary.

Access via the web browser means that the data is available from the intranet system and therefore no maintenance is involved. This benefits technologists conducting process analyses, for example, and enables managers to readily visualize production KPIs. Entirely new possibilities result from the use of standard tablet devices, allowing service personnel to have an overview of the complete process in real time directly at the machine. Not only does this make the servicing

job a lot easier; it is also much safer, because safety-related information can be retrieved directly at the section of the paper machine being serviced and immediate intervention is possible if necessary.



# ComCore Technical Details

- Development environment to IEC 61131-3
- Online/offline functions like break points, online change, fieldbus configuration, etc.
- Real-time capable runtime system
- Simultaneous engineering
- No need for complex client installations
- Web-based operation
- Mobile clients for maintenance activities in the field
- Remote service and maintenance options
- Access to reports from entire intranet, access to data and statistics, alternative report types
- Export function in PDF or Excel
- Integrated alarm function and access to data history
- Analysis functions e.g. FFT, correlation